

Determining Eligibility for Open and Closed Enrolled Sites in a Needy Area

Summer Food Service Program Site Eligibility and Meal Chart

Site Type	Eligibility Type	Eligibility Duration	Number & Type of Meals
Open and Restricted Open	SED Data	5 years	May serve up to 2 meals (not lunch & supper)
	Census Block Group	5 years	
	Housing Authority Information	1 year	
Closed Enrolled	SED Data	5 years	May serve up to 2 meals (not lunch & supper)
	Census Block Group	5 years	
	Income Applications	1 year	
	Categorical Eligibility*	1 year	
Migrant+	Migrant Certification	1 year	May serve up to 3 meals
Nonresidential Camp+	Income Applications Categorical Eligibility* & a Day Camp Permit	1 year	May serve up to 3 meals Supper must start before 7pm and end by 8pm
Residential Camp+	Income Applications Categorical Eligibility* & a Residential Camp Permit	1 year	May serve up to 3 meals Supper must start before 7pm and end by 8pm

+ Camp and Migrant Sites may seek approval to receive NYS reimbursement for serving a fourth meal supplement. The number of fourth meal supplements cannot exceed the number of supper meals claimed.

*Categorical Eligibility- there are two ways children can be classified as categorically eligible







Participation in another comparable Federal assistance program:	Through Documentation that the child is:
Supplemental Nutrition Program (SNAP)	Homeless, runaway, or migrant
Direct Certification (DCMP)	Foster child
Upward Bound	Enrolled in a Federally funded Head Start Program
Temporary Assistance for Needy Families (TANF)	
Food Distribution Program on Indian Reservations (FDPIR)	

To qualify an **Open Site** or a **Closed Enrolled in a Needy Area**, you may use the school's **LEA Code** from the [Area Eligible School Data for Qualifying Open and Closed Enrolled Sites in a Needy Area List](#) or obtain the **Census Block Code** from the [Site Expansion and Capacity Builder](#).

Determining Eligibility Using SED Data

1. Go to the Child Nutrition Knowledge Center under Determining Eligibility and Site Type and click on ‘2023 SFSP Eligibility List to Qualify Open and Closed Enrolled Sites’ or follow the links above.

Determining Eligibility and Site Type

- [2023 SFSP Eligibility List to Qualify Open and Closed Enrolled Sites](#)
- [Site Eligibility and Meal Chart](#) 
- [2023 SFSP Parent Letter \(2/23\)](#) 
- [2023 SFSP Income Eligibility Form \(2/23\)](#) 
- [2023 SFSP Income Eligibility Guidelines \(2/23\)](#) 
- [2022 SFSP Income Eligibility Guidelines \(2/22\)](#) 
- [Re-Issue of Disclosure of Eligibility Information](#) 

2. Click on your County to see if your school building is listed.
2022-23 SFSP Eligibility List for Open and Closed Enrolled Sites

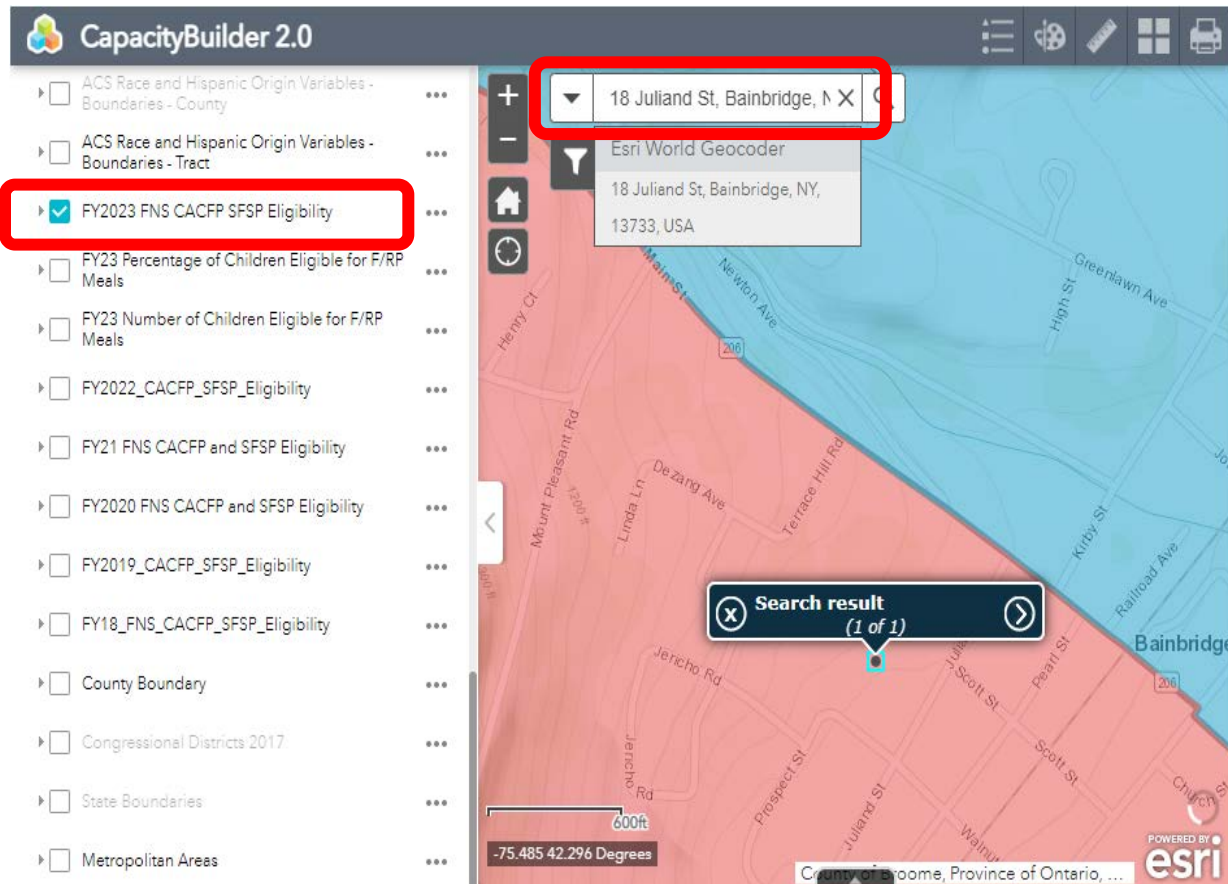
Albany	Herkimer	Richmond
Allegany	Jefferson	Rockland
Bronx	Kings	St. Lawrence
Broome	Lewis	Saratoga
Cattaraugus	Livingston	Schenectady
Cayuga	Madison	Schoharie
Chautauqua	Manhattan	Schuyler
Chemung	Monroe	Seneca
Chenango	Montgomery	Steuben
Clinton	Nassau	Suffolk
Columbia	Niagara	Sullivan
Cortland	Oneida	Tioga
Delaware	Onondaga	Tompkins
Dutchess	Ontario	Ulster
Erie	Orange	Warren
Essex	Orleans	Washington
Franklin	Oswego	Wayne
Fulton	Otsego	Westchester
Genesee	Queens	Wyoming
Greene	Rensselaer	Yates
Hamilton		

3. If the children you plan on feeding attend a school listed under ‘RECIPIENT NAME’, then you may use the ‘RECIPIENT LEA CODE’ to qualify your site. The RECIPIENT LEA CODE is the number you will need to enter into CNMS on the ELIGIBILITY screen.
4. Please note, this data may also be used to qualify other feeding sites in the geographic area such as parks, pools, and libraries.

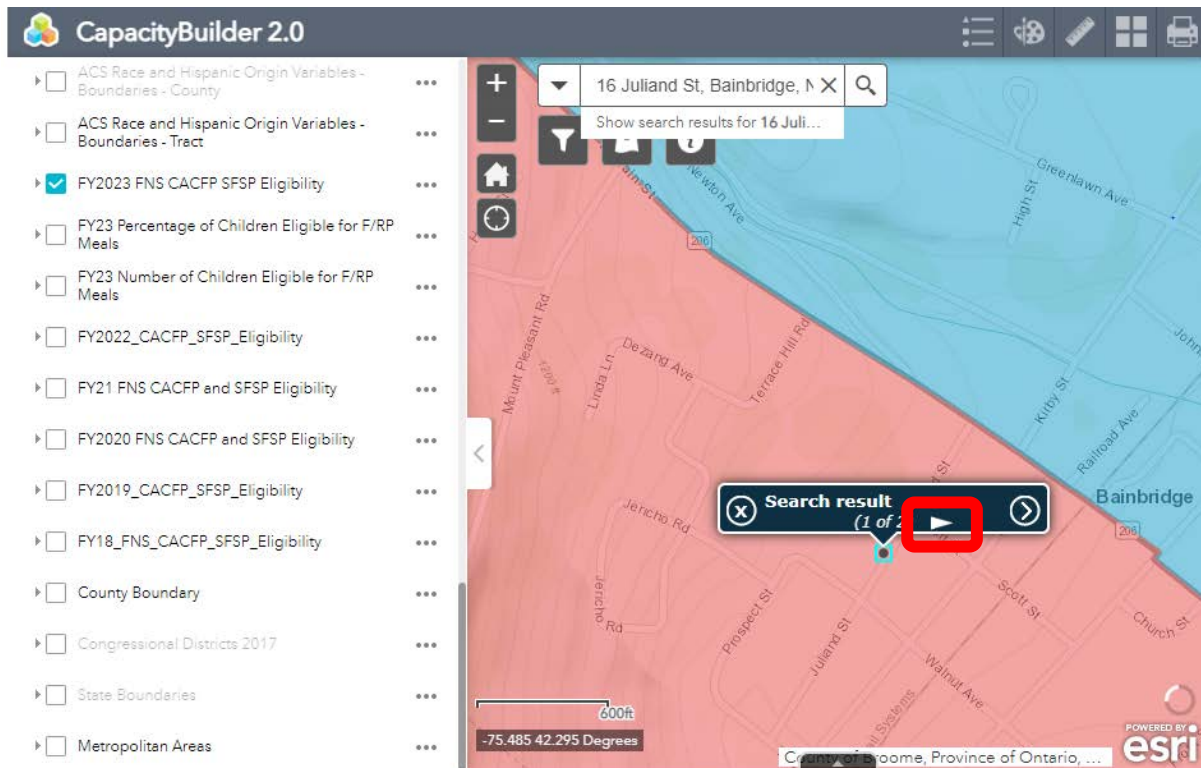
Sponsor County Name	Sponsor LEA Code	Sponsor Name	Recipient LEA Code	Recipient Name
Albany	010100010000	Albany City SD	010100010042	Abrookin Career-Technical Ctr
			010100010034	Albany High School
			010100010023	Albany School Of Humanities
			010100010039	Arbor Hill Elementary School
			010100010018	Delaware Community School
			010100010027	Eagle Point Elementary School
			010100010050	Edmund J O'Neal MS Of Excellence
			010100010029	Giffen Memorial Elementary School
			010100010014	Montessori Magnet School
			010100010045	Myers Middle School
			010100010019	New Scotland Elementary School
			010100010020	North Albany Academy
			010100010043	P J Schuyler Achievement Academy

Derterminig Eligibility Using Census Data

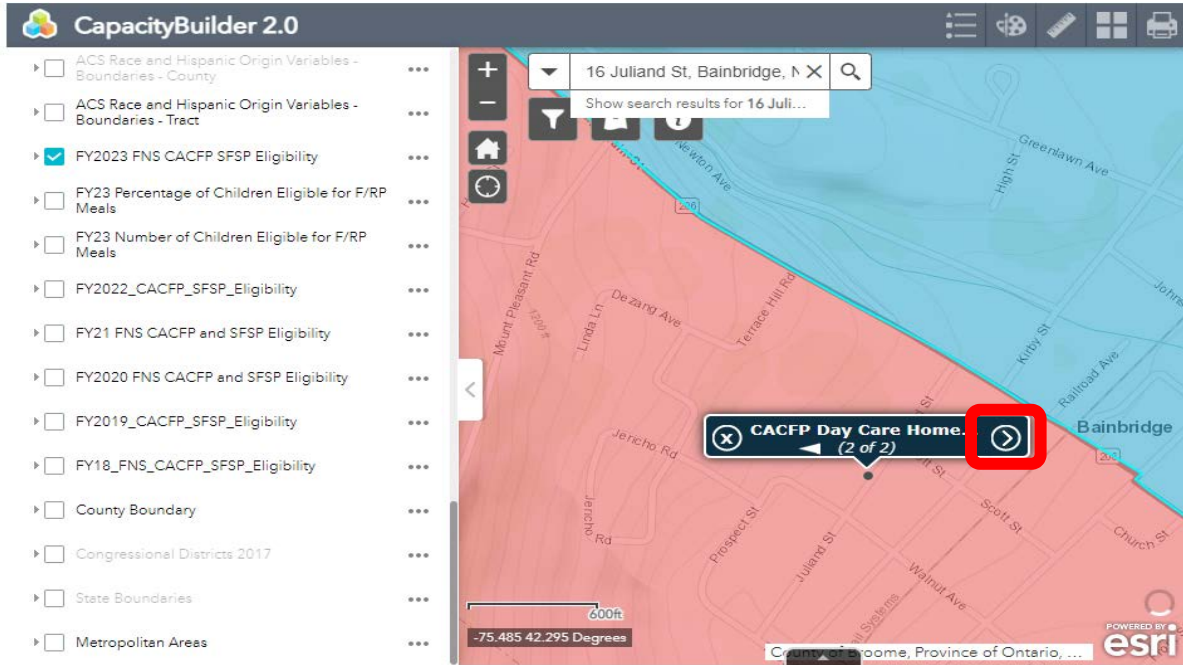
1. Navigate to the [USDA SFSP Capacity Builder](#) and enter the full address of the SITE location.
2. Choose **FY2023 FNS CACFP SFSP Eligibility** from the left side of the screen. Once the box is checked, the map will display the colored overlays to determine of your site qualifies or not.
3. If the location of your site is in a pink shaded area, then you may operate an open site or closed enrolled site in a needy area.



4. Click on the solid white arrow next to the site location.



5. The information below will be displayed after clicking the arrow.



6. The GEOID number is the **Census Block Group Number**. This is the information you will need to enter into CNMS to qualify your site.

CACFP Day Care Home (Tier I) and SFSP Summer Meal Site Eligibility for FY23: 360179709012	
GEOID	360179709012
State	New York
FY 2023 Area Eligible?	YES
CBG: Percentage of children (0-18) eligible for F/RP meals	71.90
CBG: Number of children (0-18) eligible for F/RP meals (Numerator)	205.00
CBG: Total children (0-18) (Denominator)	285.00
CBG: Percentage of children (0-12) eligible for F/RP meals	68.60
CBG: Number of children (0-12) eligible for F/RP meals (Numerator)	120.00
CBG: Total children (0-12) (Denominator)	175.00
Census Tract: Percentage of children (0-18) eligible for F/RP meals	58.80
Census Tract: Percentage of children (0-12) eligible for F/RP meals	54.80

Entering Eligibility into CNMS

1. Log into CNMS and go to SFSP Profile/Renewal and click on 'Eligibility Due'

LEA Code	Rural/Urban	Kosher	Eligibility/Due	Method of Service	Site Type
	Urban		This Year	Satellite	Open
		Milk Waiver N		Unitized Waiver N	Mobile Route N
		Non-Congregate N			

SFSP Program Information															
Start Date	End Date	Approval Date	Site Visit	Food Service Review by	Site Kitchen				Site Field Trips						
06/26/23	08/29/23		Waived	07/23/23											
	Mon	Tue	Wed	Thu	Fri	Sat	Sun	Partic/Enroll	CAP	Offer Vs Served	FOC	Contract	Menu Option	POS	Shifts
Breakfast	09:00am-10:00am	09:00am-10:00am	09:00am-10:00am	09:00am-10:00am	09:00am-10:00am	N/A	N/A	100	100	No		N	SFSPMP	1	1
Lunch	12:00pm-01:00pm	12:00pm-01:00pm	12:00pm-01:00pm	12:00pm-01:00pm	12:00pm-01:00pm	N/A	N/A	100	100	No	Yes	N	SFSPMP	1	1

NSLP Access National School Lunch Program details from NSLP Profile Link at the top of this page.

2. Click on the arrow to see a list of eligibility types. Select the appropriate one for the site.
3. If using SED data, enter a LEA Code into the 'Qualifying School LEA Code' field. Use the 12 digit LEA code(s) of the eligible school(s) from which the site will draw its attendance.
4. If using Census Data, use the 10 digit 'Block Group Code'.
5. Click 'Save'.

Eligibility Periods

Eligibility Type:

Approval Year: 2023-24

Start: 06/15/23

End: 06/14/28

End Year:

Qualifying School LEA Code:

Qualifying School LEA Code:

Qualifying School LEA Code:

Block Group Code:

Eligibility Periods

Eligibility Type:

Approval Year: 2022-23

Start: 06/15/22

End: 06/14/27

End Year:

Qualifying School LEA Code:

Qualifying School LEA Code:

Qualifying School LEA Code:

Block Group Code: